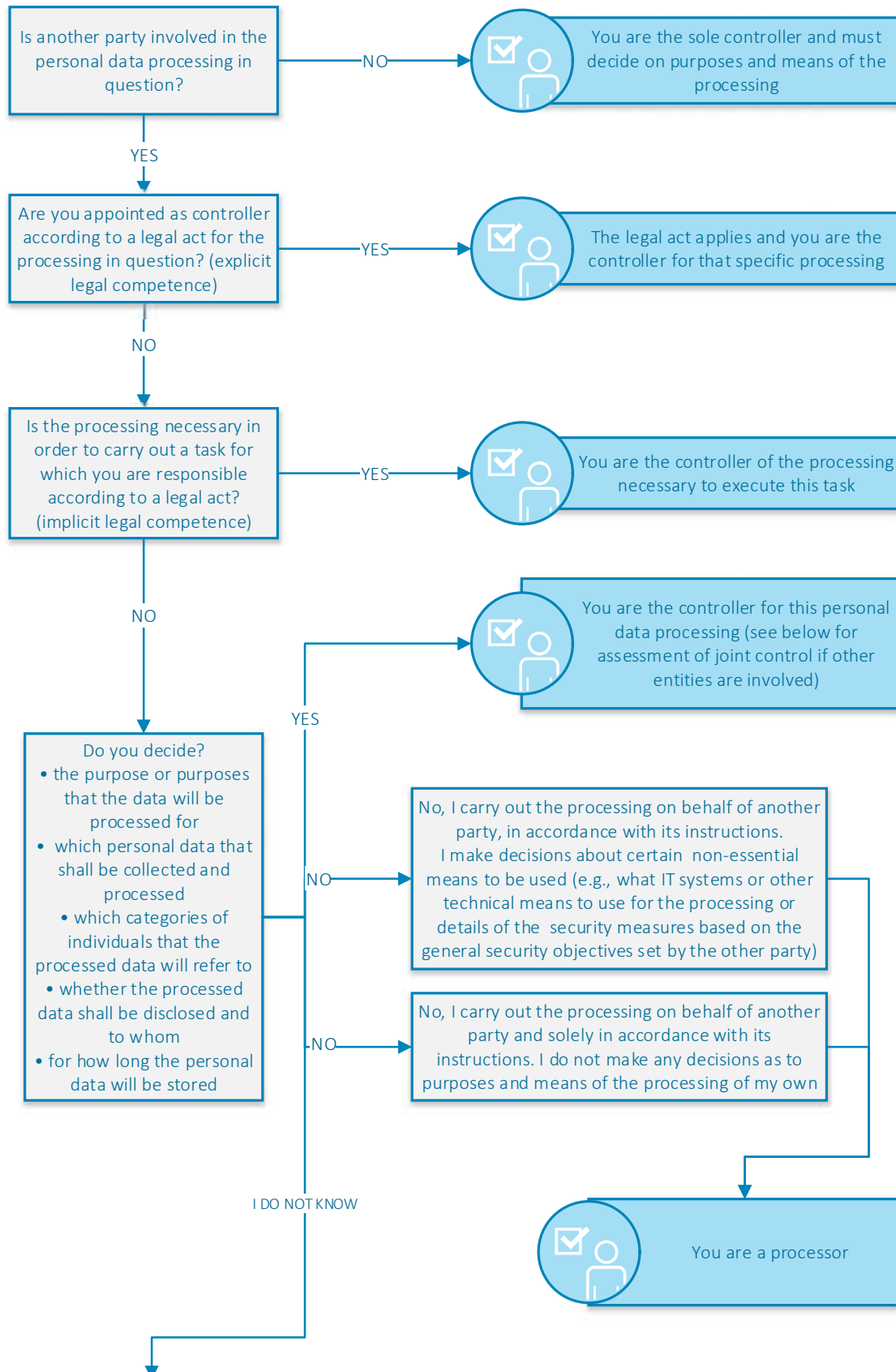
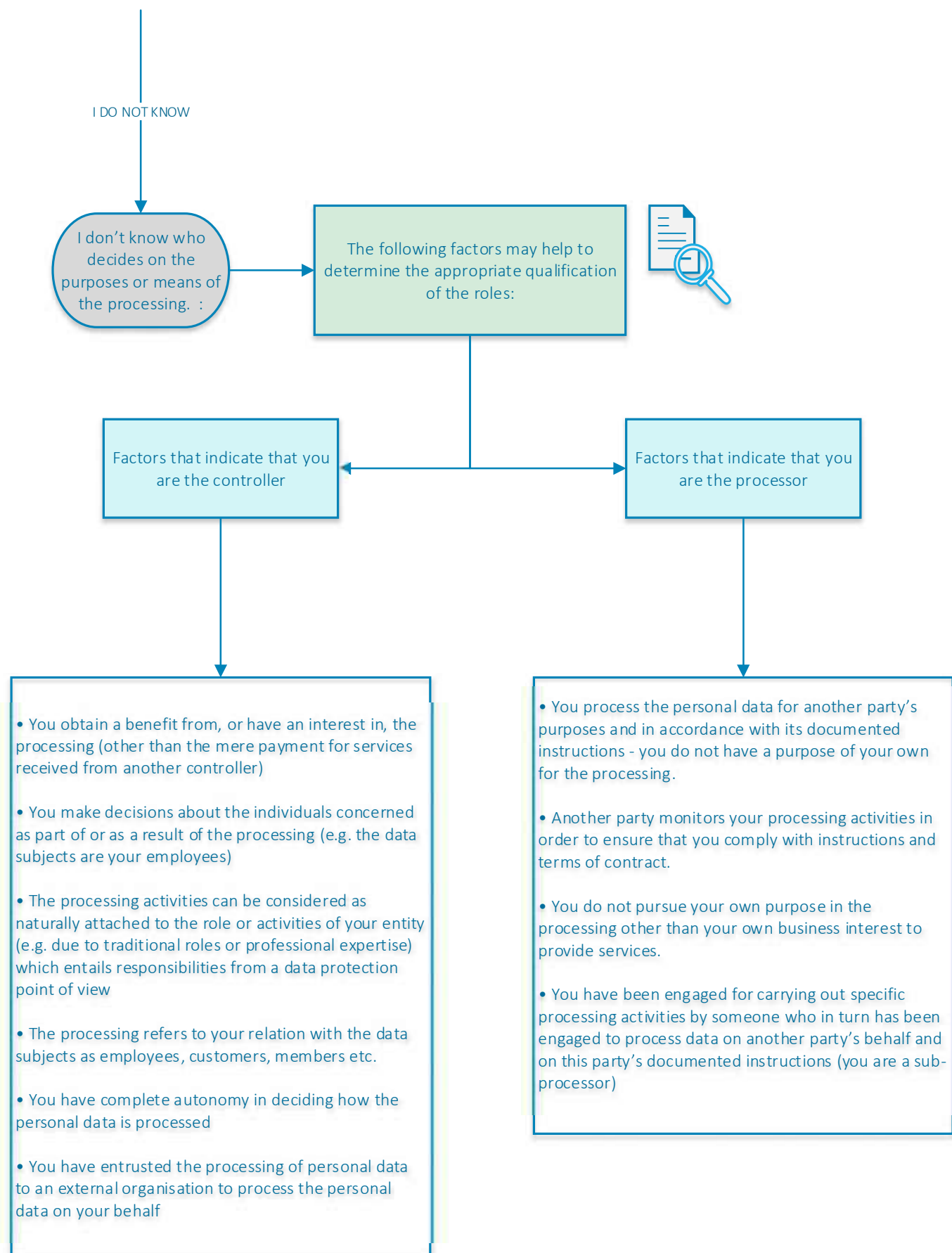


## Annex I – Flowchart for applying the concepts of controller, processor and joint controllers in practice

**Note:** in order to properly assess the role of each entity involved, one must first identify the specific personal data processing at stake and its exact purpose. If multiple entities are involved, it is necessary to assess whether the purposes and means are determined jointly, leading to joint controllership.





**Joint controllership - If you are the controller and other parties are involved in the personal data processing:**

